

# Data

# Detective

## Finding Islands on the Land

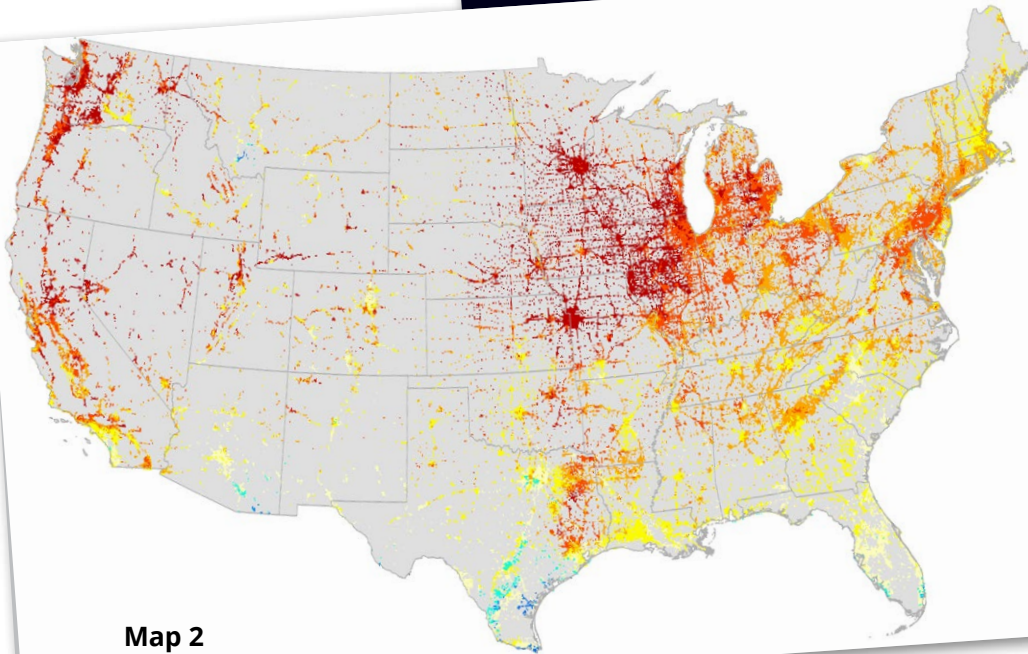
When viewing the Earth from space, there is no question that humans have changed our planet. Both maps appear to have *islands* of light or heat. Why? Be a data detective and solve the mystery of the *islands* on the land.

– D. Janney and T. Owen

Map #1 shows lights at night across the United States.



Map 1



Map 2

Map #2. This map shows us where heat is being absorbed by impervious surfaces across the United States.

Red shows where land surfaces are hotter than their surrounding areas.

1. What do the brightest areas on the first map and the red areas on the second map have in common?
2. What are the dotted lines that appear to connect the brightly lit locations to each other on the first map? What about the lines on the second map?
3. Why are these dotted lines appearing on both maps?

Answers on page 15